



# Industry

THE MODERN FAN COMPANY  
Customer Service  
M-F 8am - 4pm (PST)

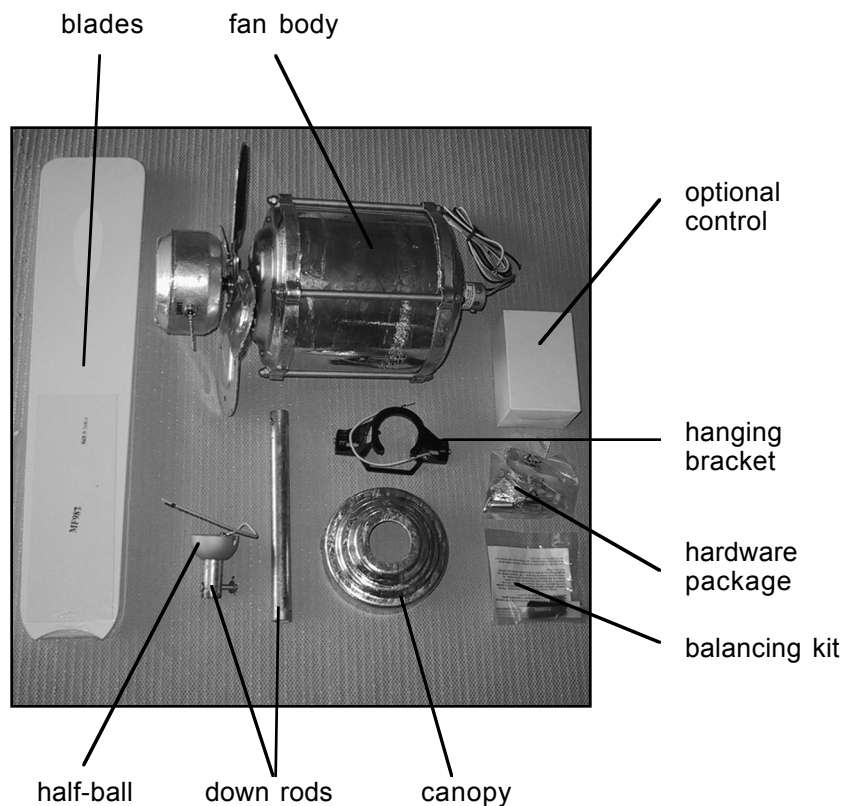
(ph) 888.588.3267  
www.modernfan.com

## Industry Fan- Installation instructions

Should you have any questions or difficulty installing your new fan, please contact Modern Fan Co. customer service immediately.

**Note:** Power supply must be turned off prior to any contact with electrical wires. It is recommended that a licensed electrician be hired to install your ceiling fan.

(1) Remove and identify contents of carton.

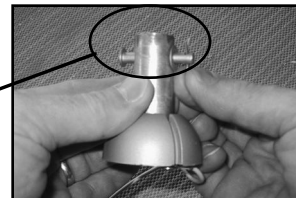


(2) Using machine screws from hardware package or existing screws in junction box, securely attach hanging bracket to ceiling junction box.



(3) Remove the cotter pin, washer and stopper pin assembly from the small down rod and set aside for step (5).

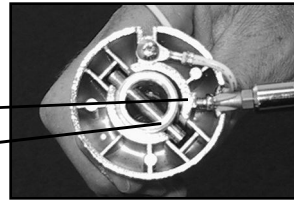
cotter pin, washer and stopper pin



---

**(4)** Remove stopper pin and half ball from small down rod by loosening set screw on half ball. Set all parts aside for step **(7)**.

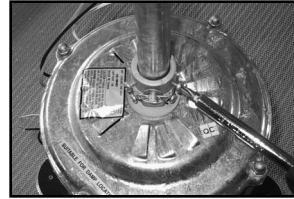
set screw  
stopper pin



---

**(5)** Run fan wires through selected down rod. Reinstall cotter pin, washer and stopper pin from step **(3)**. Firmly and evenly tighten set screws on fan collar against down rod.

Note: If ceiling height allows, using a longer down rod will increase airflow and efficiency.



---

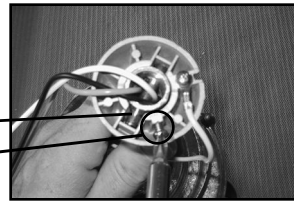
**(6)** Slide fan canopy over down rod and carefully rest on top of fan body.



---

**(7)** Run fan wires through half ball and reinstall on end of down rod. Be sure that stopper pin is inserted through down rod and seated in half ball. Tighten set screw against down rod.

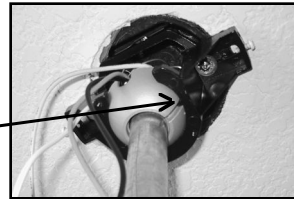
stopper pin  
set screw



---

**(8)** Lift fan to ceiling and set half ball in the hanging bracket so that the ridge on the edge of the hanging bracket is seated in the slotted channel in the half ball.

channel and ridge

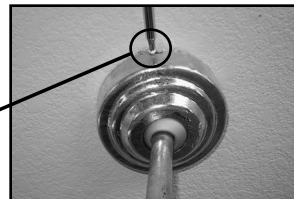


With fan safely suspended by bracket, make wire connections with wire nuts included in hardware package as described in the control installation instructions. If using the #003, #004 or #005 control, the receiving unit should be placed inside the arms of the hanging bracket and connected at this time.

---

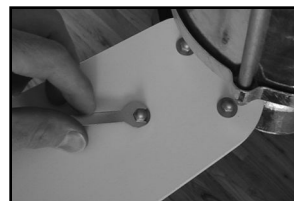
**(9)** Remove set screws on the sides of the hanging bracket. Lift canopy to ceiling. Align slots on side of canopy with set screw holes on hanging bracket; reinstall and tighten set screws to hold canopy in place.

set screw



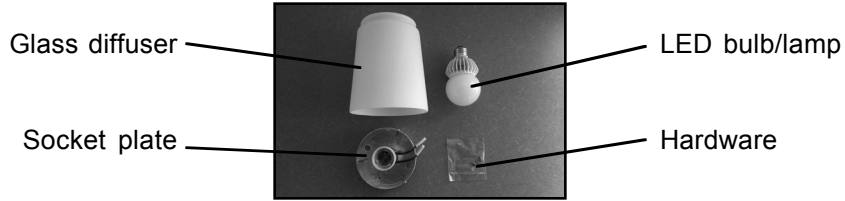
---

**(10)** Using carriage bolts, washers and acorn nuts from hardware package, secure blades to blade arms. Washers and nuts should be on top of blade. Tighten nuts with open wrench included in hardware package



---

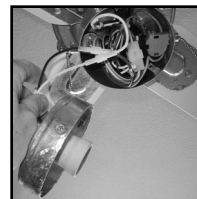
**(11)** To install optional light kit, begin by identifying all parts, then follow steps (a) through (f) below: Otherwise, skip this section.



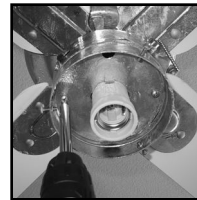
(a) Remove switch housing cover.



(b) Join wire leads from fan with wires from socket and socket plate using quick-connect attachments.



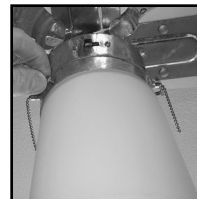
(c) Attach socket plate to fan using screws from hardware package. Be careful not to pinch or damage wires.



(d) Install LED lamp/bulb (included with your fan).



(e) Attach glass diffuser to socket plate by hand-tightening three set screws carefully against glass.



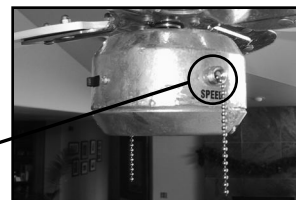
(f) Use pull chain marked "LIGHT" to operate light. Alternatively, leave in the "on" position to enable control from wall or handheld remote control(s).



---

**(12)** Fan speeds can be controlled using the "pull chain" marked SPEED, or with one of our wall or remote control options. If using an optional wall or remote control, the "pull chain" should be left on the factory setting at high speed, or full power.

Speed

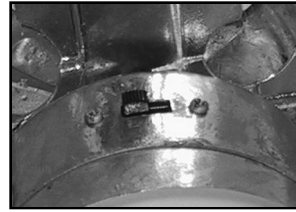


---

**(13)** Install wall control as described in the control installation instructions (unless using a handheld remote control only).

---

**(14)** Your fan is REVERSIBLE for summer and winter operation. The reverse switch is located on side of the switch housing. The LEFT position is for summer and the RIGHT position is for winter.



---

**(15)** The rotor and motor of your fan have been dynamically balanced at the factory. In addition, the blades have been matched to the nearest gram to ensure a well balanced ceiling fan. Furthermore, a blade balancing kit has been included with your fan. Please refer to the instructions packaged with the balancing kit should your fan require additional balancing.

---



709 Washington Street • Ashland, OR 97520 • (tel) 888.588.3267 • (e) [info@modernfan.com](mailto:info@modernfan.com)

[www.modernfan.com](http://www.modernfan.com)