



# Cirrus

THE MODERN FAN COMPANY  
Customer Service  
M-F 8am - 4pm (PST)

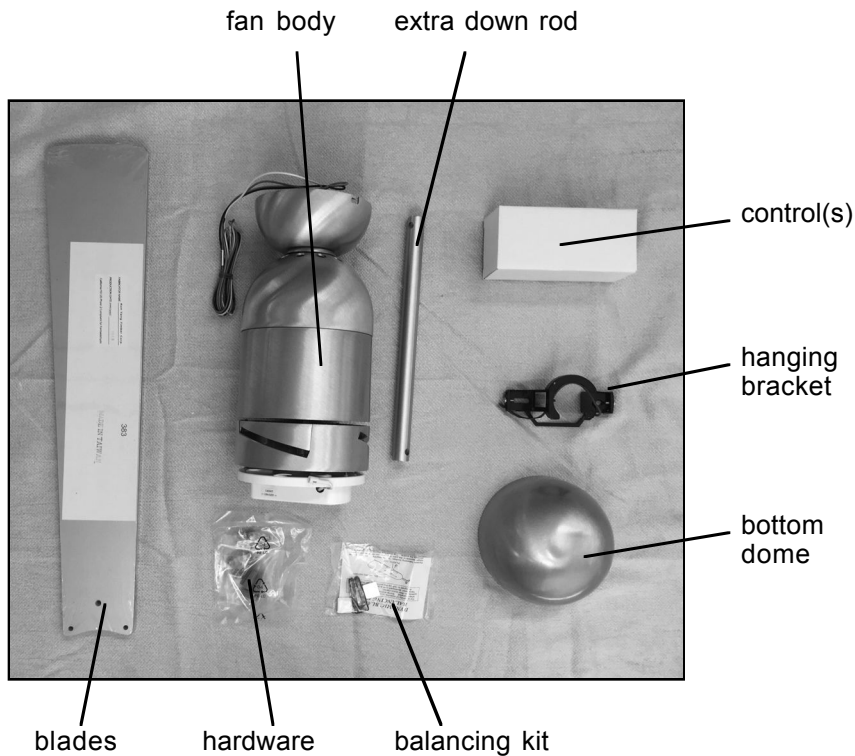
(ph) 888.588.3267  
www.modernfan.com

## **Cirrus Fan- Installation instructions**

Should you have any questions or difficulty installing your new fan, please contact Modern Fan Co. customer service immediately.

**Note:** Power supply must be turned off prior to any contact with electrical wires. It is recommended that a licensed electrician be hired to install your ceiling fan.

(1) Remove and identify contents of carton.



(2) Using the existing screws from your junction box, or the machine screws from the hardware package, secure the hanging bracket to the ceiling junction box.



---

**(3)** The Cirrus fan ships in a 17" long configuration. If ceiling height allows, using a longer down rod will increase airflow and efficiency. If you would like to install a longer down rod, follow steps **(a)** through **(d)**. Otherwise, proceed to **step (4)**.

**(a)** Remove stopper pin and half ball from small down rod by loosening set screw on half ball. Set these parts and canopy aside for reinstallation.

stopper pin  
set screw  
canopy

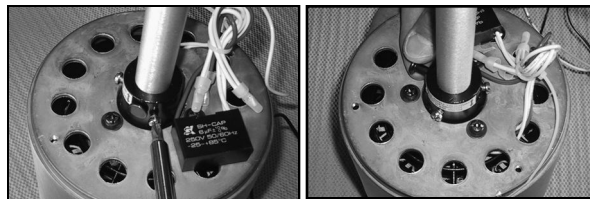


**(b)** Remove top dome by loosening screw on fitting against down rod, above top dome. Slide fitting and dome up down rod and set aside for reinstallation.

fitting  
top dome



**(c)** Slightly loosen three screws where down rod is attached to motor and remove the cotter pin and through pin assembly. Set all parts aside for reinstallation.



**(d)** Remove down rod and run fan wires through selected replacement down rod. In reverse order, follow steps above to reassemble.

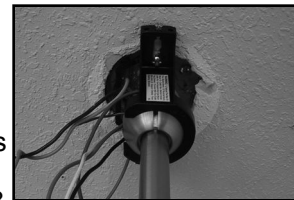
**Note:** When tightening the three screws where the down rod attaches to the motor, take care that the down rod is centered evenly. This may require adjustment of the three screws.

Very Important: The through pin and cotter pin assembly at the base of the down rod and the stopper pin at the top of the down rod must be reinstalled for a safe and secure installation of your fan.

---

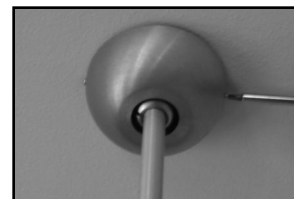
**(4)** Lift fan to ceiling and set half ball in the hanging bracket so that the ridge on the edge of the hanging bracket is seated in the slotted channel in the half ball.

With fan safely suspended by bracket, make wire connections with wire nuts included in hardware package as described in the control installation instructions. If using the optional #003, #004 or #005 control, the receiving unit should be placed inside the arms of the hanging bracket and connected now.



---

**(5)** Remove set screws on the sides of the hanging bracket. Lift canopy to ceiling. With slots on side of canopy aligned with set screws on hanging bracket, reinstall and tighten set screws to hold canopy in place.



---

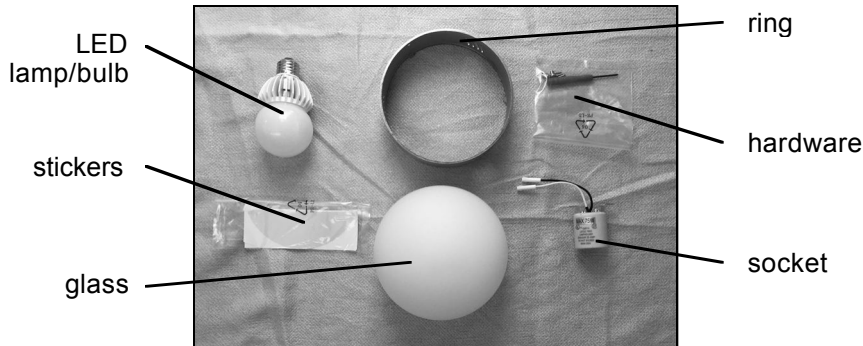
**(6)** Carefully insert blades into rotor slots, and using pan head screws from hardware package, secure blades to rotor. Screwdriver and screw passes through oval holes to access blade and rotor attachment points.



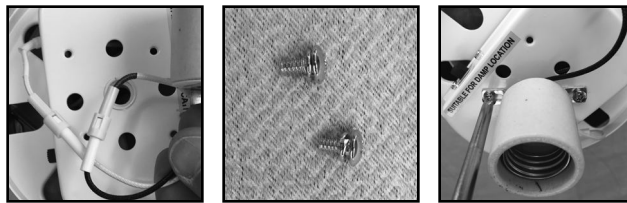
(7) Install bottom dome by rotating in the clock wise direction, or if using an optional light, skip this and proceed to step (8).



(8) To install optional light kit, begin by identifying all parts. Then follow steps (a) through (e):



(a) Connect wire leads from the fan to the socket, and using screws from hardware package, attach socket bracket to switch housing.

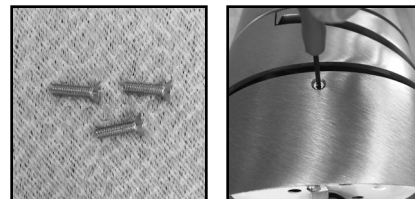


(b) To prevent escape of light into rotor area, apply reflective stickers to switch housing plate, covering blade screw slots.

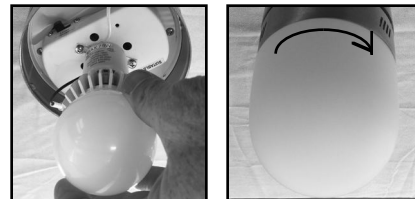


(c) Move the light switch to the "ON" position.

(d) Align holes on side of ring with holes on switch housing plate. Secure using small countersink screws and screwdriver from hardware package. Start all three screws before tightening completely.

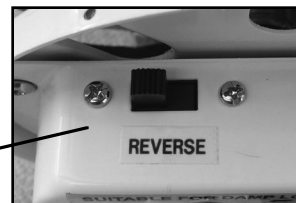


(e) Install lamp. Then align channels/grooves on glass diffuser with tabs on ring and rotate glass until firmly tight. Do not over tighten.



(9) Your fan is reversible for summer and winter operation. The reverse switch is located on the side of the switch housing. The LEFT position is for summer and the RIGHT position is for winter.

reverse switch



---

**(10)** Install wall control as described in the control installation instructions (unless using handheld remote only).

---

**(11)** The rotor and motor of your fan have been dynamically balanced at the factory. In addition, the blades have been matched to the nearest gram to ensure a well balanced ceiling fan. Furthermore, a blade balancing kit has been included with your fan. Please refer to the instructions packaged with the balancing kit should your fan require additional balancing.

---



709 Washington Street • Ashland, OR 97520 • (tel) 888.588.3267 • (e) [info@modernfan.com](mailto:info@modernfan.com)

[www.modernfan.com](http://www.modernfan.com)